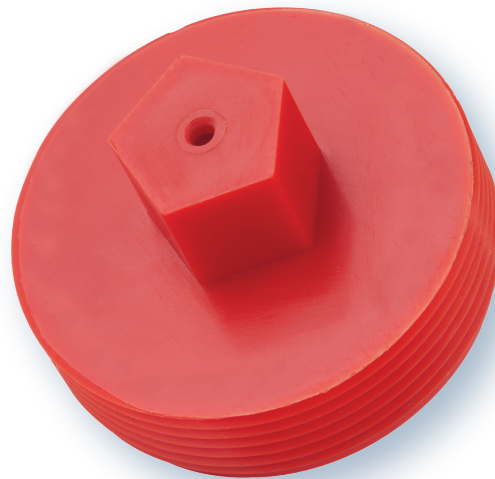




The Right Connection™

Red Thermoplastic FDC Plug

PP250F



- fits standard 2½" NH (NST) female swivel; protects threads and prevents entry of debris
- withstands wide range of temperatures from **-4°F to 200°F**
- 1-1/8" pentagonal nut discourages casual tampering and mischief, no pin lugs or rocker lugs to grip
- weep hole in nut allows for drainage, helps inspector to quickly spot leaky check valves
- remove from FDC with a standard adjustable hydrant wrench, no need for expensive, inconvenient master keyed systems or special tools
- precision machined 2½" NH (NST) threads
- no scrap value, minimizes theft factor
- economically priced
- patent pending
- weight: .02 lbs.

ph: 410.778.2002
fx: 410.778.4702

Dixon Powhatan
800 High Street • Chestertown, MD 21620
www.dixonpowhatan.com

ph: 877.712.6179
fx: 800.283.4966